

## Invitation

CMD 2022 will be held on November 13-18 in 2022, at the Kitakyushu International Conference Center in Kitakyushu, Japan. The organizing committee cordially invites you to submit papers and participate in the conference.

## About CMD

The CMD was established in 2006 with the aim of providing a platform for academia, industry, technology providers, consultants, and experts in power engineering to discuss and share ideas, results, experiences and to talk over future trends and technologies in the field of electric power apparatus monitoring, fault diagnosis, and asset management. The first CMD conference was held in Changwon (Korea, 2006), followed by in Beijing (China, 2008), Tokyo (Japan, 2010), Bali (Indonesia, 2012), Jeju (Korea, 2014), Xian (China, 2016), Perth (Australia, 2018) and Thailand (Hybrid, 2020).

## Slogan and Main Topics

A slogan and main topics are followings, but they did not limit the submission of papers.

Slogan:

Toward Effective Asset Management Technology, Toward Sustainable, Reliable and Secure Future

Main topics:

- Condition monitoring and diagnosis for power equipment and power systems
- Condition monitoring and diagnosis for industry, innovation and infrastructure
- Condition monitoring and diagnosis in renewable energy plants and affordable and clean energy
- Failure phenomena for power equipment based on electrical, mechanical, chemical and thermal causes
- Dielectric materials and their aging mechanisms
- Degradation assessment for power equipment
- State-of-the-art methodologies and strategies for effective replacement
- Advanced sensing techniques and IoT technologies for condition monitoring and diagnosis
- Applications of AI technologies for data mining and condition assessment
- Responsible consumption and production issues including reduce, reuse and recycle.

Not only oral and poster sessions, but also “demonstration session” is being planned, to establish opportunities for presenters to introduce their developed and developing technologies and products to attendee with their actual products and so on.

## CMD 2022 Organization:

### Honorary Chair

T. Okamoto (Kanto Gakuin University, CRIEPI)

### General Chair

N. Hayakawa (Nagoya University)

### Vice Chair

M. Hikita (Kyushu Institute of Technology)

N. Hozumi (Toyohashi University of Technology)

Y. Tanaka (Tokyo City University)

### General Secretary

T. Takahashi (CRIEPI)

### Secretary in Charge of Treasury and Asian Affairs

Y. Murakami (Toyohashi University of Technology)

Y. Sekiguchi (Sumitomo Electric Industries)

N. Takamura (Fukuoka University)

### Secretary in Charge of Program and Publications

H. Kojima (Nagoya University)

H. Miyake (Tokyo City University)

### Secretary in Charge of Local Arrangement

M. Kozako (Kyushu Institute of Technology)

K. Uchida (Chubu Electric Power)

T. Umemoto (Mitsubishi Electric)

### Secretary in General affairs

Y. Hayase (Fuji Electric)

Y. Makino (CRIEPI)

## Contacts:

E-mail: CMD\_2022@ieej.org



Beautiful autumn scenery at a park in Kitakyushu



## 9th International Conference on Condition Monitoring and Diagnosis 2022 (CMD 2022)

November 13-18, 2022  
The Kitakyushu International  
Conference Center,  
Kitakyushu, Japan

## First Call for Papers

Sponsored by:

IEEJ Technical Committee on Dielectrics and  
Electrical Insulation

Technically co-sponsored by:

IEEE Dielectrics and Electrical Insulation Society

Supported by:

City of Kitakyushu  
Kitakyushu Convention & Visitors Association

## About Kitakyushu

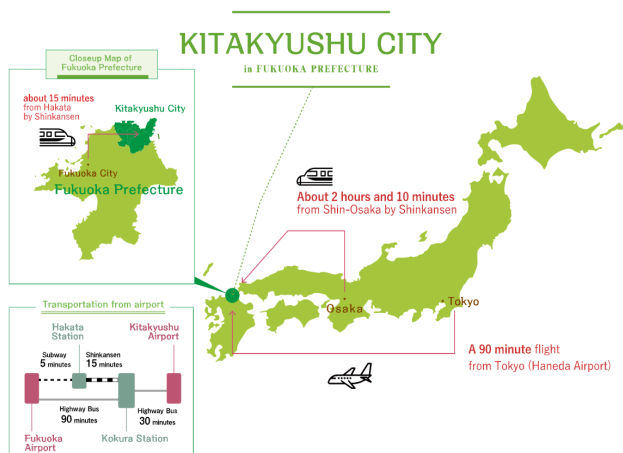
Kitakyushu is situated in the western area in Japan. It takes 90 minutes by airplane from Tokyo, or it takes 2 hours and 10 minutes by Japanese bullet train called Shinkansen from Osaka.

Kitakyushu city has a long history to overcome major urban challenges, such as pollution. Thus, Kitakyushu has begun to contribute to the improvement of the global environment through environmental cooperation activities focusing on Asia. In 2011, the organization for economic co-operation and development (OECD) selected Kitakyushu as one of Green Growth Model City that has a balance between the environment and economy. Kitakyushu is the first Asian city selected for this honor.

For more information, please visit the following websites:

<https://www.gururich-kitaq.com/en/>

<https://www.gururich-kitaq.com/en/downloads/tourist-data-download>



Kokura Castle



Local food, Yaki-udon (Japanese Stir fried Udon noodle)

## About Venue

The conference venue will be the Kitakyushu International Conference Center. It takes 5 minutes from the JR Kokura Station on foot. The following website shows more detail information:

<http://www.kitaqmeeting.jp/access>

### Getting to Kitakyushu International Conference Center(KICC)



## Language

The working language of the conference is English. All printed matter will appear in English.

## Submission of Papers

You are invited to submit an abstract of about 300 words by Apr. 8, 2022. The abstract submission procedure will be announced on the conference website. Acceptance notices will be sent to corresponding authors by Apr. 24, 2022. The authors of accepted papers will be requested to submit paper manuscripts electronically by Jun. 17, 2022. All papers will be peer reviewed. More information on the manuscript submission will be provided on the conference website. Accepted papers will be published in the Conference Proceedings issued electronically.

## Registration Fees (tentative)

Early bird registration fees are ¥35,000 (Japanese yen) for members of IEEJ, IEEE, CIGRE, CES, or KIEEME, ¥80,000 for non-members, and ¥15,000 for students with valid IDs. Manuscript submission fee is ¥10,000 per one manuscript. This fee will be deducted from the registration fee for the authors presenting their papers, although the maximum deduction is ¥10,000 per one attendee.

## Important Dates

**Abstract Submission:** Apr. 8, 2022

**Abstract acceptance/Rejection Notices:**

Apr. 24, 2022

Jun. 17, 2022

**Full paper Submission:**

**Conference Dates:**

Nov. 13 - 18, 2022

## CMD 2022 Website

<http://www2.iee.or.jp/~cmd2022>



## Conference Secretariat

Mr. Yuta Makino:

c/o Electric Power Engineering Research Laboratory,  
Central Research Institute of Electric Power Industry  
2-6-1 Nagasaka, Yokosuka, Kanagawa 240-0196, Japan  
E-mail: [CMD\\_2022@ieej.org](mailto:CMD_2022@ieej.org)